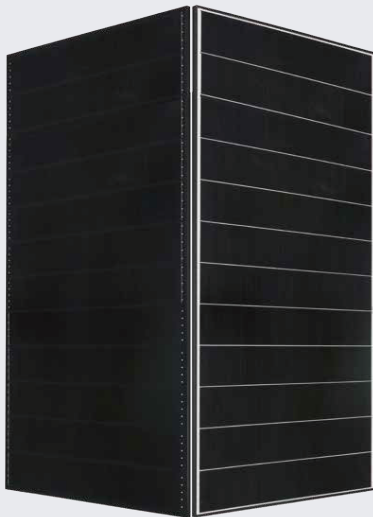


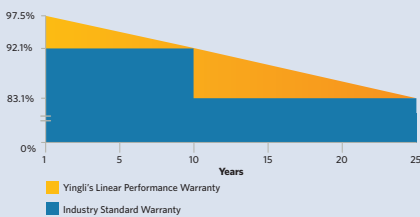
YLM-T 72 CELL SHINGLED



15 YEAR PRODUCT WARRANTY

0 - 4.99 W POWER TOLERANCE

25 Years Linear Warranty



IMPROVED POWER NEVER SETTLE FOR LESS

Choosing the best P-type monocrystalline cells, YLM series modules are making the best out of your system. Trust in the expertise of Yingli and well proven technology.



Lower temperature

New shingled Electronic Circuit design, generate lower working temperature by current of cell decrease.



No solder design

Shingled design have no solder in front. No light block of solder, increase light use efficiency.



PID Resistant

Tested in accordance to the standard IEC 62804, our PV modules have demonstrated resistance against PID (Potential Induced Degradation), which translates to security for your investment.



High Power Density

An increased power density of the modules leads to a smaller footprint of your system and a decrease in specific system costs.

Yingli Green Energy

Yingli Green Energy Holding Company Limited, known as "Yingli Solar", is one of the world's leading solar panel manufacturers with the mission to provide affordable green energy for all. Yingli Solar makes solar power possible for communities everywhere by using our global manufacturing and logistics expertise to address unique local challenges.

YLM-T 72 CELL SHINGLED

ELECTRICAL PERFORMANCE

Electrical parameters at Standard Test Conditions (STC)

			YLxxxDS-46b(XXX=Pmax)					
Module type								
Power output	P_{max}	W	490	485	480	475	470	465
Power output tolerances	ΔP_{max}	W	0/+5					
Module efficiency	η_m	%	20.9	20.7	20.5	20.3	20.1	19.8
Voltage at P_{max}	V_{mpp}	V	38.9	38.8	38.8	38.7	38.6	38.5
Current at P_{max}	I_{mpp}	A	12.60	12.50	12.37	12.27	12.18	12.08
Open-circuit voltage	V_{oc}	V	46.7	46.6	46.6	46.5	46.4	46.3
Short-circuit current	I_{sc}	A	13.28	13.22	13.16	13.10	13.04	12.96

STC: Irradiance 1000 W/m² module temperature 25°C AM=1.5

Electrical parameters at Nominal Operating Cell Temperature (NOCT)

Power output	P_{max}	W	369	365	361	358	354	350
Voltage at P_{max}	V_{mpp}	V	37.1	37.0	37.0	36.9	36.8	36.7
Current at P_{max}	I_{mpp}	A	9.95	9.87	9.77	9.69	9.62	9.54
Open-circuit voltage	V_{oc}	V	44.5	44.4	44.4	44.3	44.2	44.1
Short-circuit current	I_{sc}	A	10.72	10.67	10.62	10.57	10.52	10.46

NOCT: Irradiance 800 W/m² ambient temperature 20°C wind speed :1m/s Power measurement tolerance: +/-3%

THERMAL CHARACTERISTICS

Nominal operating cell temperature	NOCT	°C	45+/-2
Temperature coefficient of P_{max}	γ	%/°C	-0.34
Temperature coefficient of V_{oc}	β_{Voc}	%/°C	-0.27
Temperature coefficient of I_{sc}	α_{Isc}	%/°C	0.04

OPERATING CONDITIONS

Max. system voltage	1000V _{DC}
Max. series fuse rating	20A
Operating temperature range	-40°C to 85°C
Max. static load, front (e.g., snow)	5400Pa

CONSTRUCTION MATERIALS

Front cover (material / thickness)	low-iron tempered glass / 3.2mm
Cell (material)	monocrystalline silicon
Frame (material)	anodized aluminum alloy
Junction box (protection degree)	IP67
Cable (length / cross-sectional area)	1200mm / 4mm ²
Plug connector (type / protection degree)	MC4 Compatible

• Due to continuous innovation, research and product improvement, the specifications in this product information sheet are subject to change without prior notice. The specifications may deviate slightly and are not guaranteed.

• The data do not refer to a single module and they are not part of the offer, they only serve for comparison to different module types.

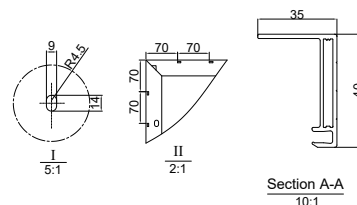
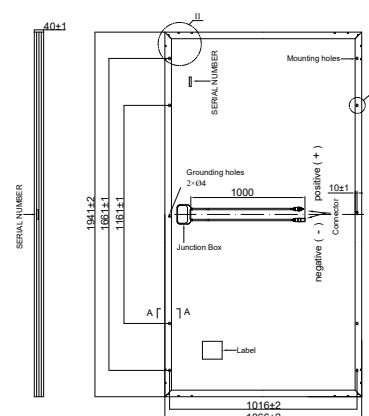
GENERAL CHARACTERISTICS

Dimensions (L / W / H)	2056×1140×35mm
Weight	25kg

PACKAGING SPECIFICATIONS

Number of modules per pallet	31
Number of pallets per 40' container	22

Unit: mm



CERTIFICATES



Warning: Read the Installation and User Manual in its entirety before handling, installing and operating Yingli Solar modules.

Yingli Partners:

Yingli Green Energy Holding Co., Ltd.

service@yingli.com

Tel: +86-312-2188055

YINGLISOLAR.COM